



1 Choose a Wallet design, and print it on regular paper or card paper. Regular paper is recommended. Once you print your chosen design, print the folding/cut guide on the flip side.



2 Fold it in half short end to short end first.



3 Unfold it back out, then fold each short end of the paper to the center line.



4 Continuing from step 3, use the half fold in step 2, and fold it in half. Once folded, fold it in half in the other direction with the result above.



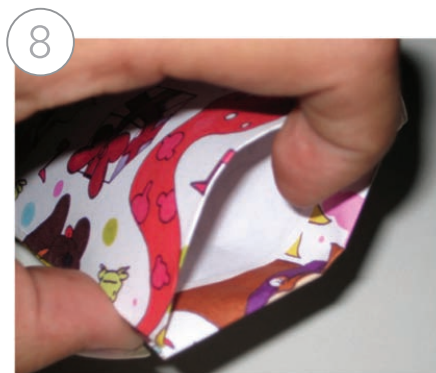
5 Unfold the paper. Cut out the striped area, and cut the tabs on the edge.



6 With the tabs cut, fold them as seen above. With the gap created by the cutout, pull the gap together with each cut paper edge touching and tape it together on each side very well.



7 Fold it back up like in step 4.

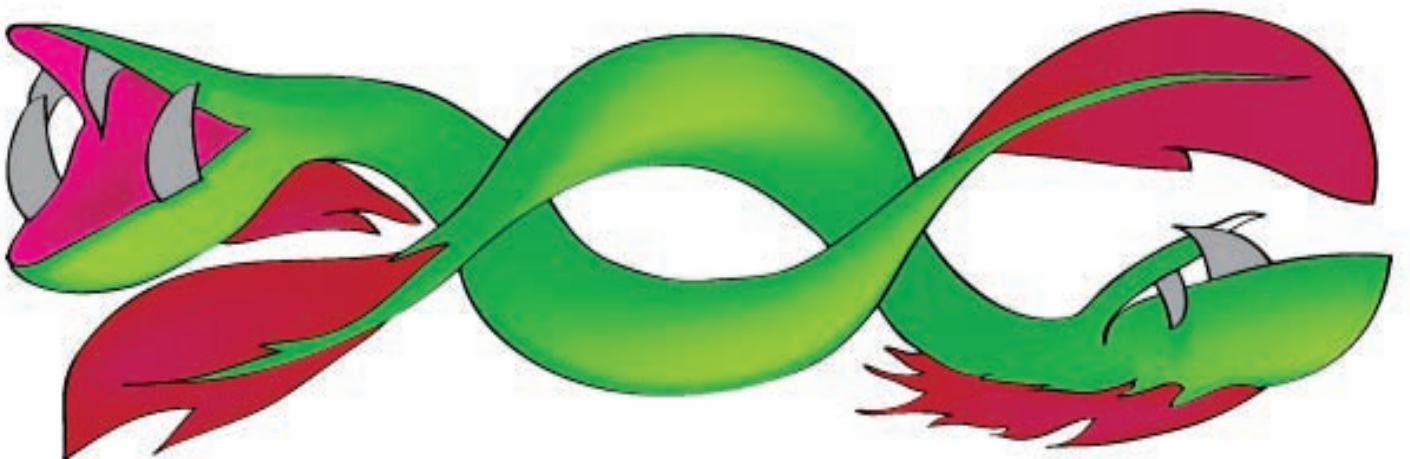
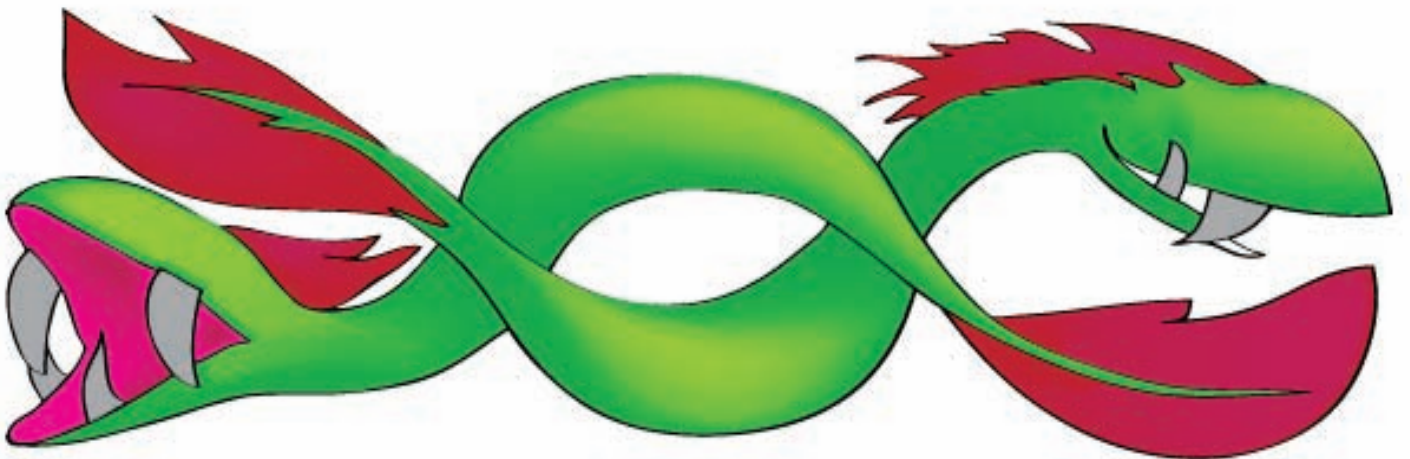
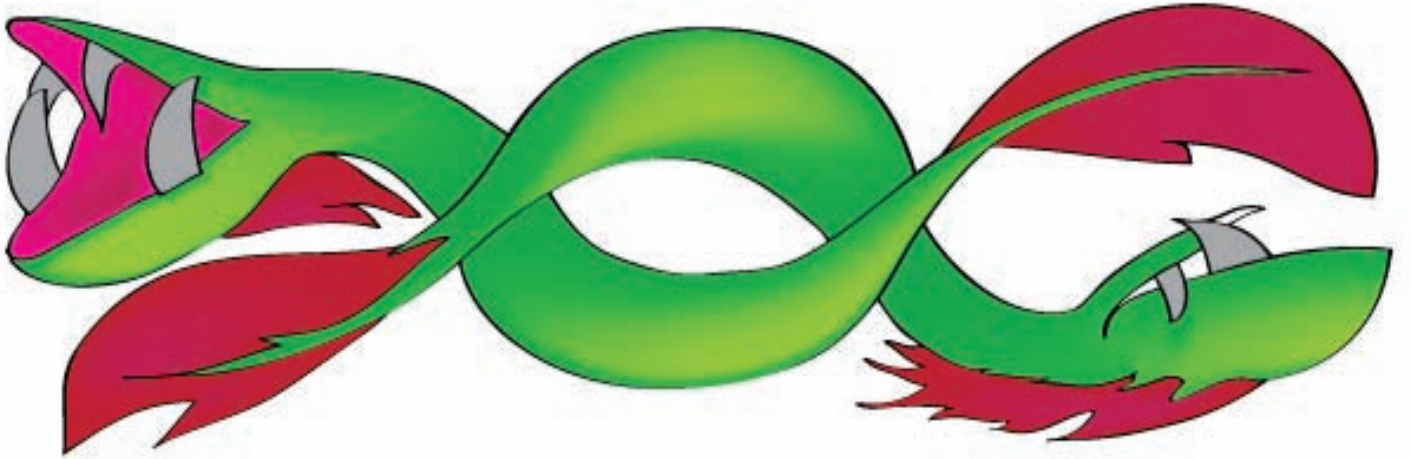
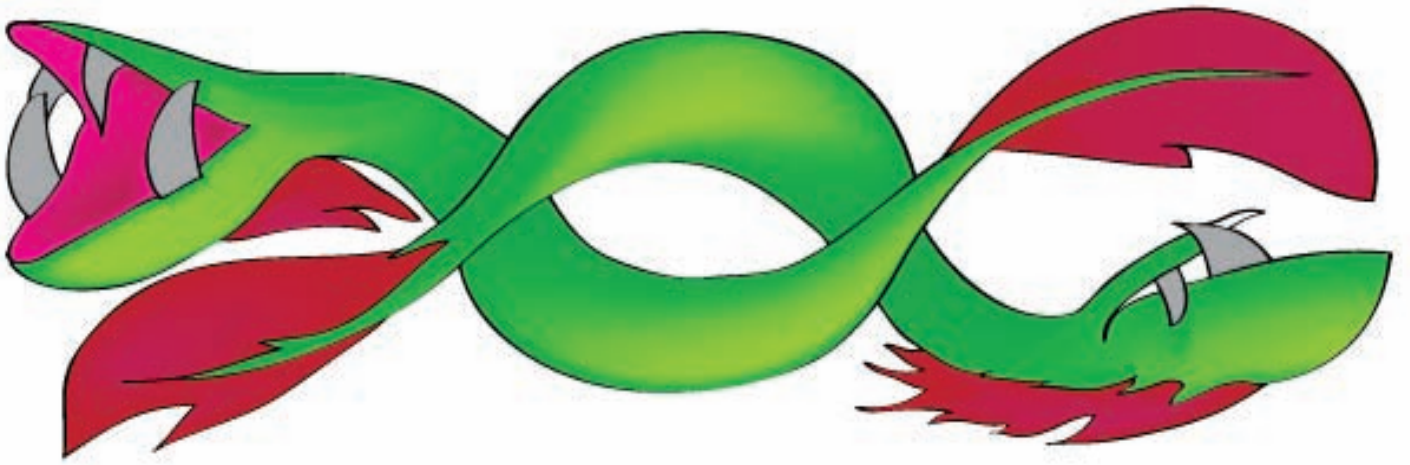


8 Fold in the tab on each side of the wallet to close up the sides. Tape up these areas (with clear tape) for extra strength.



9 After its taped up, once folded the wallet may need to be settle in by pressing on the edges to reinforce the folds. Once it feels nice and flat, put your stuff in!

IT'S OVER!



EARTHBOUND

